

C33720TB

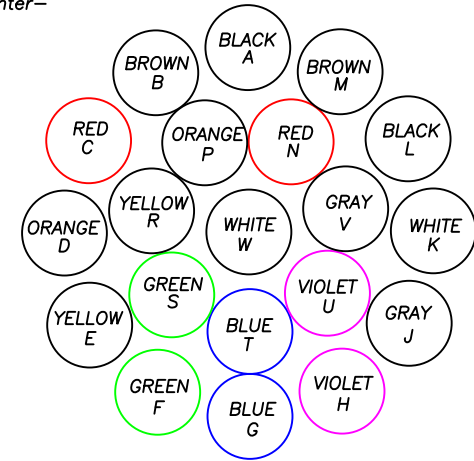
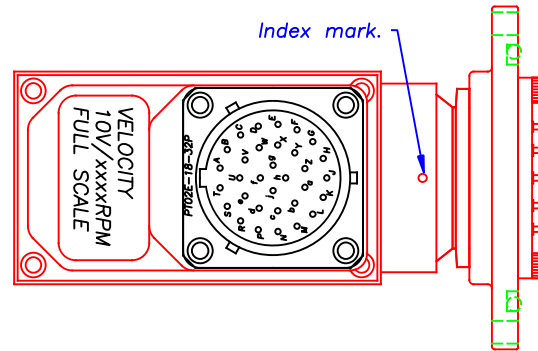
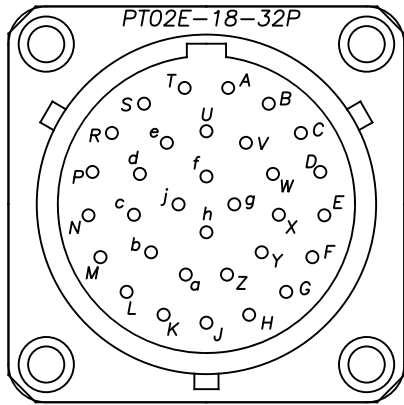
For connector dimensions and information about sealing backshells, see pages 4 - 8 of the price list.

NOTE: Terminal colors and corresponding connector letters (A-W) are shown below: (20 connections, counter-clockwise spiral pattern)

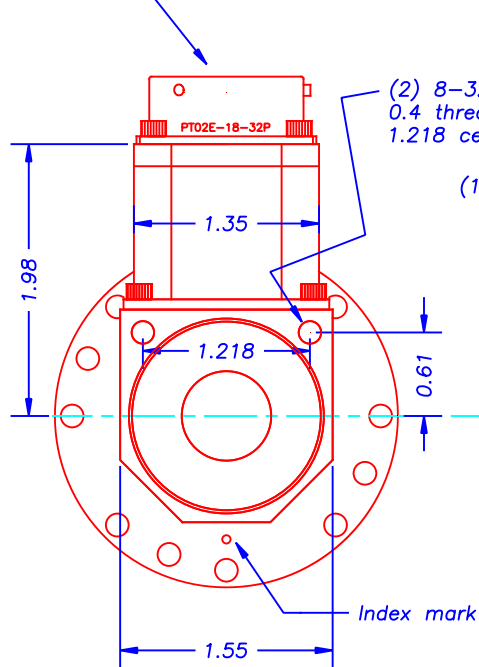
DATE	BY	REVISION	LOC.
2-17-00	KDL	Update & add information.	

32 contact stator connector  
Bendix PT02E-18-32P

Contact	Function
A - W	20 slip rings
<u>Encoder</u>	
X	Ground
Y	Option pin 1
Z	Option pin 2
a	Velocity+Position Ground
b	Velocity output
c	Position output
d	+6 to +16VDC input
e	Ground
f	Output A
g	Output B
h	Output I
j	Output A ⊕ B

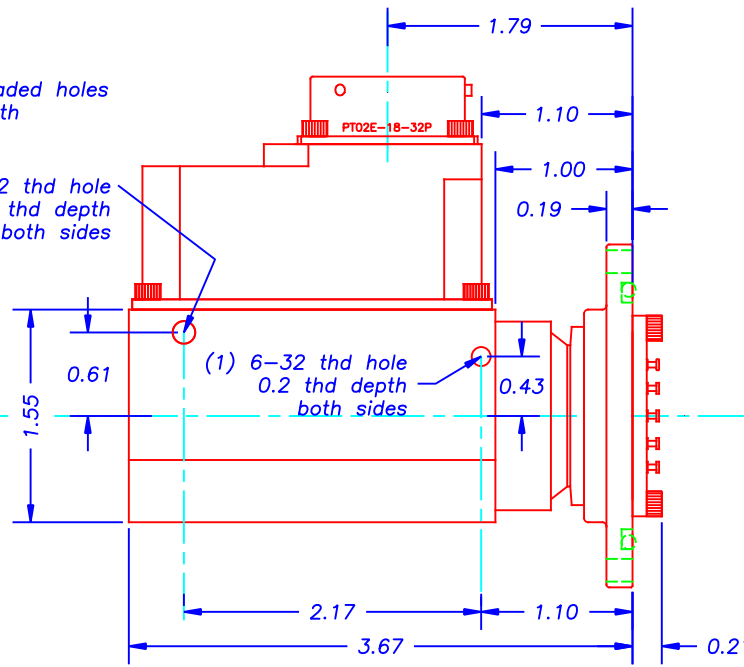


ROTOR TERMINAL DETAIL VIEW  
WIRING DIAGRAM FOR 20 SLIP RINGS

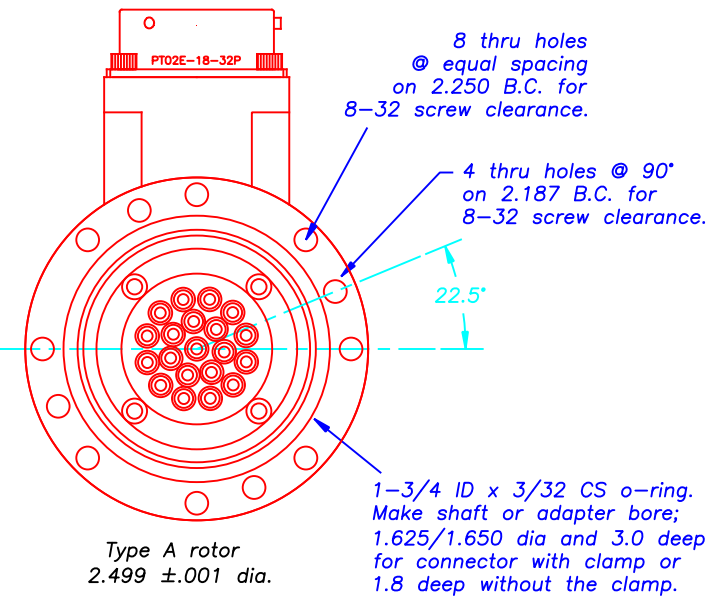


(2) 8-32 threaded holes  
0.4 thread depth  
1.218 centers

(1) 8-32 thd hole  
0.2 thd depth  
both sides



(1) 6-32 thd hole  
0.2 thd depth  
both sides



8 thru holes  
@ equal spacing  
on 2.250 B.C. for  
8-32 screw clearance.

4 thru holes @ 90°  
on 2.187 B.C. for  
8-32 screw clearance.

1-3/4 ID x 3/32 CS o-ring.  
Make shaft or adapter bore;  
1.625/1.650 dia and 3.0 deep  
for connector with clamp or  
1.8 deep without the clamp.

Weight 15oz. (19oz. with mating connectors).  
The encoder & its' electronics requires a  
+6 to +16Vdc, 400mA power supply.  
Temperature range of the electronics is -40C to +85C.

SR/ERT series  
Model SR20A\_/T\_\_\_/TX

20 SLIP RINGS & AN ENCODER WITH BUILT IN ENCODER ELECTRONICS  
IN A WEATHERPROOF HOUSING.

**MICHIGAN SCIENTIFIC CORPORATION**  
08500 ANCE ROAD  
CHARLEVOIX, MI 49720  
PHONE: (231)547-5511 FAX: (231)547-7070

TOLERANCES .xxxx ±.0005 .xxx ±.005 .xx ±.01 ANGLES ±--- SURFACE FINISH ---RMS	DESIGNED BY: KDL DRAWN BY: KDL CHECKED BY:	DATE: 12-11-98 TITLE: OUTLINE DRAWING SHT OF SHTS: 1 SIZE: BH	SCALE: 1:1
DRAWING NO.: C33720TB	MATERIAL: 20 SLIP RINGS & ENCODER & TACH CIRCUIT		