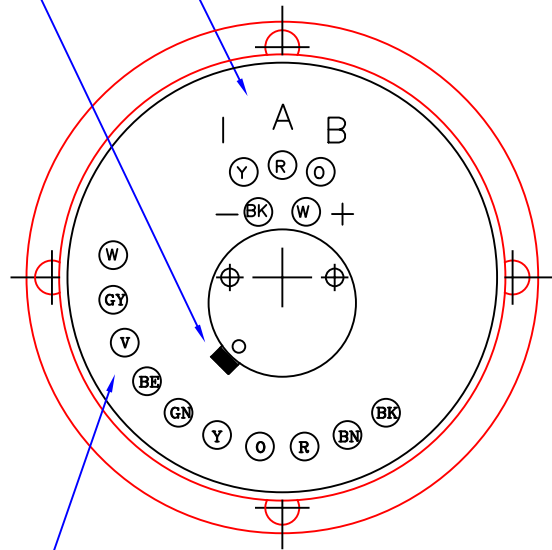


MANUAL BRUSH LIFTER  
MOVE 90° CCW TO LIFT BRUSHES

ENCODER SOLDER TERMINALS  
(POWER SUPPLY REQUIRED  
+5 V TO +25 V, 50 mA)



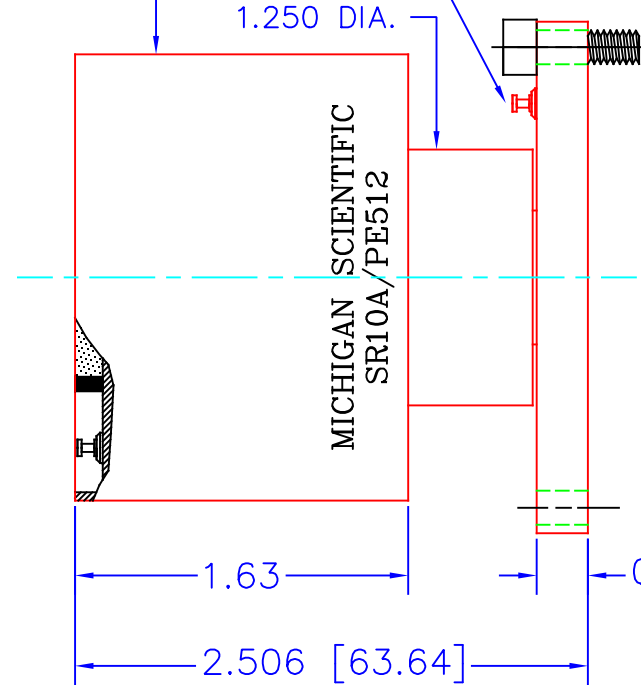
SLIPRING SOLDER  
TERMINALS (STATOR)

SLIPRING SOLDER  
TERMINALS (ROTOR)

#8-32 CLEARANCE HOLES  
TYP 4 PLACES  
EQUALLY SPACE  
ON A  $\phi 2.250$  BOLT CIRCLE

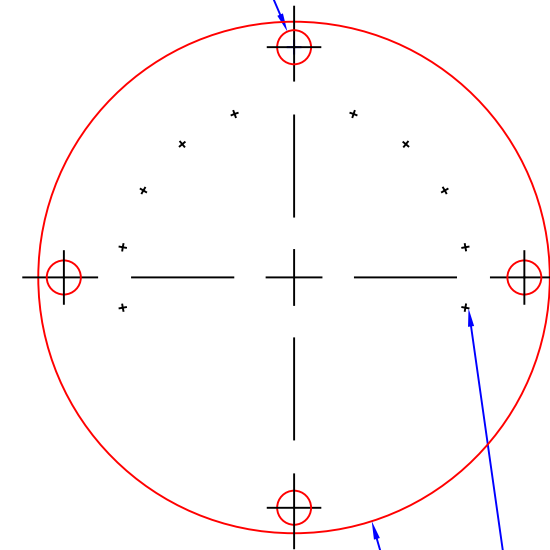
2.180 DIA.

1.250 DIA.



0.250 [6.35]

2.4990 +/- .0005 DIA



LOCATION OF ROTOR TERMINALS ON  
OTHER SIDE OF FLANGE. NOT ACTUALLY  
VISIBLE FROM EITHER END VIEW.