

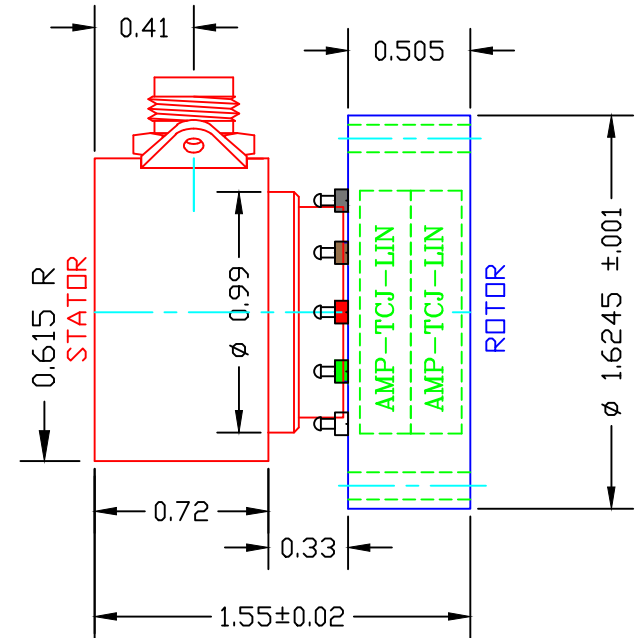
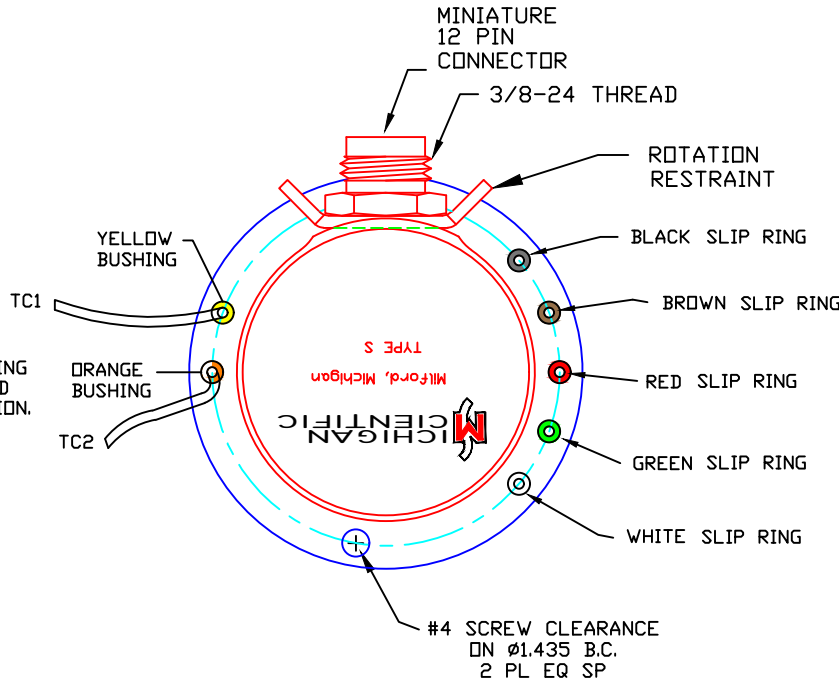
C213031A

DATE	BY	REVISION
7-14-15	KDL	1.6245±.001 ROTOR

MODEL: SHORT S10/X/TC2J-LIN

SLIP RING WITH 2 TYPE J THERMOCOUPLE LINEARIZED AMPLIFIERS BUILT INTO THE ROTOR

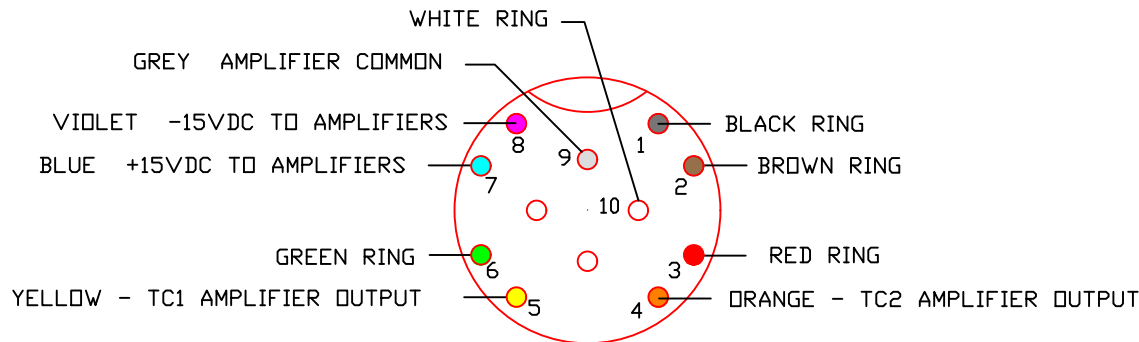
COLOR OF:	RING & FUNCTION:
RING WIRES (INTERNAL),	
BRUSH WIRES (INTERNAL),	
ROTOR TERMINALS (NO BLUE,	
VIOLET, GREY TERMINALS),	
STATOR CABLE WIRES.	
BLUE	+15VDC TO AMPLIFIERS
VIOLET	-15VDC TO AMPLIFIERS
GREY	COMMON OF AMPLIFIERS
YELLOW	TC1 AMPLIFIED OUTPUT
ORANGE	TC2 AMPLIFIED OUTPUT
BLACK	SLIP RING
BROWN	SLIP RING
RED	SLIP RING
GREEN	SLIP RING
WHITE	SLIP RING



THE TYPE J TC WIRES EXITING THE ROTOR ARE 30AWG SOLID WIRE WITH TEFLON INSULATION. LENGTH IS 8 TO 10 INCHES. MINI OMEGA TC CONNECTORS ARE ATTACHED & MATING CONNECTORS ARE INCLUDED.

SHORT S10/X/TC2J-LIN CABLE, WIRE COLORS:
SAME CABLE AS SHORT S10/X.

FRONT VIEW OF MATING CONNECTOR



ALL DIMENSIONS IN INCHES
DESIGN MAY CHANGE WITHOUT NOTICE

COPYRIGHT © 2020

MICHIGAN SCIENTIFIC CORPORATION

08500 ANCE ROAD
CHARLEVOIX, MI 49720
PHONE: (231)547-5511 FAX: (231)547-7070

TOLERANCES .xxxx ±---- .xxx ±--- .xx ±-- ANGLES ±-.-	DRAWN BY: KDL	DATE: 10-31-13	SCALE: 1:1
SURFACE FINISH ---RMS	TITLE: SHORT S10/X/TC2J-LIN		
DRAWING NO.: C213031A	CHECKED BY:	SHT OF SHTS:	SIZE AH
	MATERIAL: METAL HOUSING		