

## Services

### ENGINEERING

- Computer aided design (CAD)
- Finite element analysis (FEA)
- Failure analysis
- Product redesign
- Custom slip ring and transducer design

### STRAIN GAUGING

- Highly skilled technicians
- Gauging production components (shafts, gears, etc.)
- Deep bore gauging
- On-site gauging

### SYSTEM INSTRUMENTATION

- Measure Loads, pressures, accelerations, speeds, strains, temperatures and other parameters
- Unattended data collection
- Field to lab correlation analysis



[www.michsci.com](http://www.michsci.com)

8500 Ance Road  
Charlevoix, MI 49720  
Tel: 231-547-5511  
Fax: 231-547-7070

321 East Huron Street  
Milford, MI 48381  
Tel: 248-685-3939  
Fax: 248-685-5406

Details and specifications provided in this document are purely for informational purposes and are subject to alterations. No liability is accepted for errors or omissions.

©2022 Michigan Scientific Corporation

REV: August 31, 2022



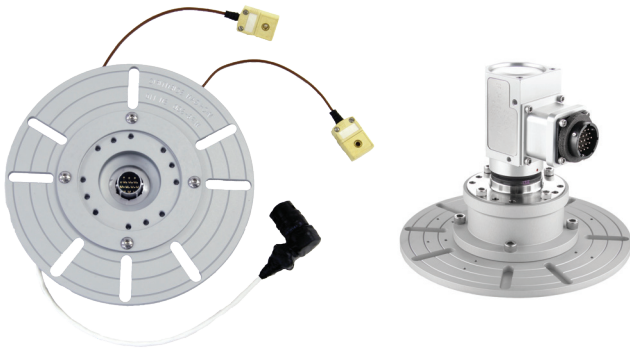
## Slip Ring Assemblies

- Make electrical connections in rotating applications
- Supply power and transmit signals from sensors
- Used in testing and automation industries



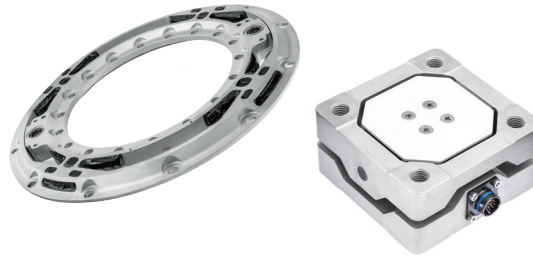
## Instrumentation Assemblies

- Signal conditioning components for wheel torque, drive-line torque, and brake testing
- Ideal for collecting data in wheel applications



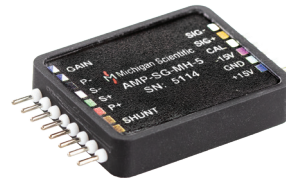
## Transducers

- Strain gauge-based transducers
- Used in laboratory, field, and production environments
- Single or multi-axis measurements of forces and moments (torque)
- Custom applications
- Strain gauging of production components



## Electronics

- Signal conditioning equipment (e.g. strain gauge amplifiers, thermocouple amplifiers, amplifier control unit, encoders, resolvers)



## Fiber-Optics

- Monitor or source signals for component testing and full-scale testing
- EMI/RFI hardened for both immunity and emissions
- Superior signal stability



## Telemetry

- Strain gauge- or thermocouple-based measurements
- Non-contacting digital wireless link
- Transmitter powered by induction or battery
- Ruggedized and weatherproof

